

**Change of Access on Recorded Plat
TMAPC July 21, 2010**

Lot 4, Block1, Harvard Square South – (9328) (PD 6) (CD 9)
East of the Southeast corner of East 41st Street South and South Harvard Avenue

This application is made to allow a change of access to shift an existing access to the west along East 41st Street South. The property is zoned PUD 761.

Staff recommends approval of the change of access. The Traffic Engineer has reviewed and approved the request. Staff recommends **APPROVAL** of the change of access as submitted.

EAST 41ST STREET SOUTH

SECTION 28

137.17' LNA 40' ACC 53.94' LNA

142.74' LNA 40' ACC 48.37' LNA

40' ACC
S89°52'14"E
524.64'

231.11'

52.19'

8'

34'

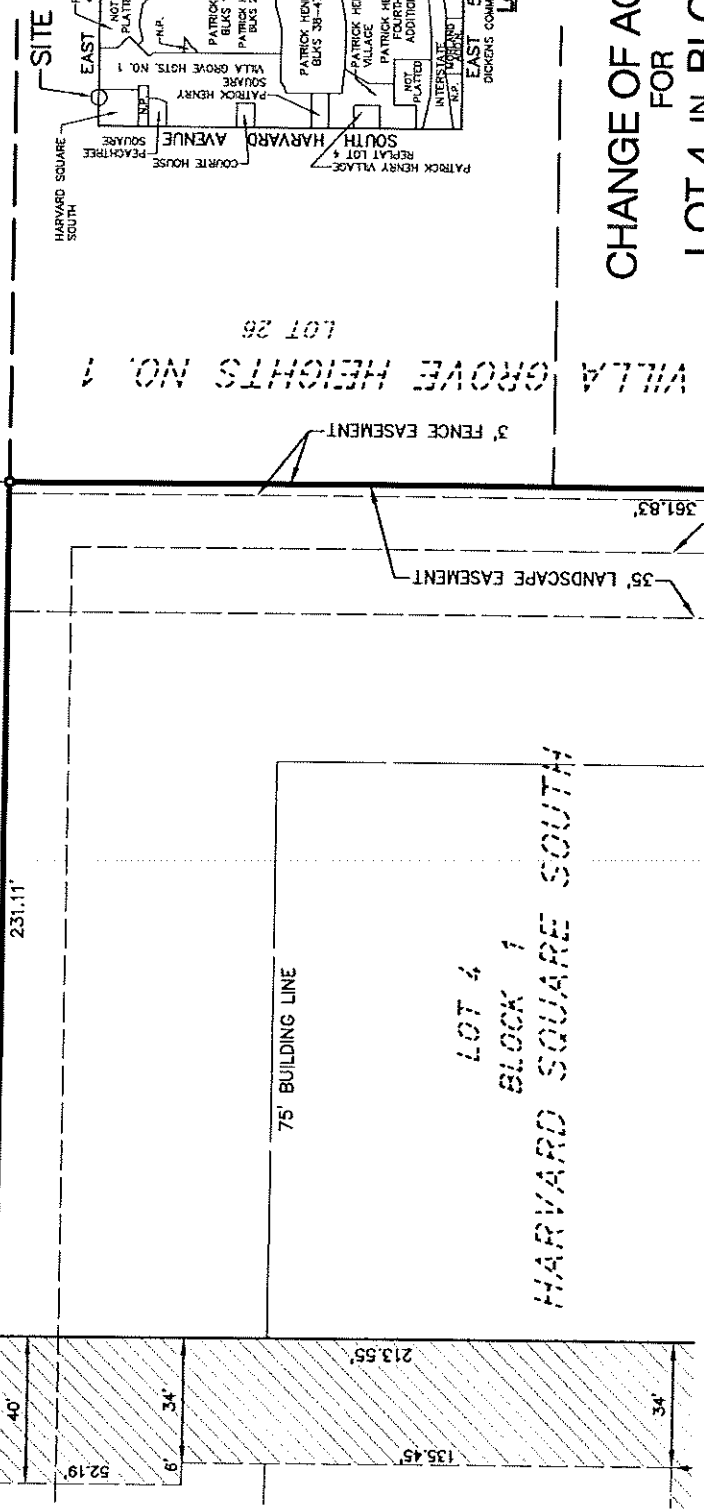
34'

135.45'

213.55'

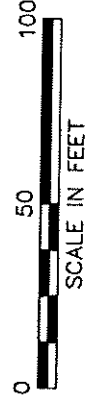
361.83'

PROPOSED LIMITS OF ACCESS
EXISTING LIMITS OF ACCESS
(BY PLAT #6289)



CHANGE OF ACCESS
FOR
LOT 4 IN BLOCK 1
OF

'HARVARD SQUARE SOUTH'
SECTION 28, T-19-N, R-13-E
CITY OF TULSA, TULSA COUNTY, OKLAHOMA



APPROVED: *Mark A. Brown* 5/26/2010
TRAFFIC ENGINEER



SACK AND ASSOCIATES, INC.
Santa Fe Depot, 111 South Elgin Avenue, Tulsa, Oklahoma 74120-1816
Ph: 918.582.4111 Fax: 918.582.4229 E-mail: sackandassociates.com
CA Number 1783 (PE/LS) Exp. June 30, 2011
Project: VILLA GROVE HEIGHTS ONE B1-A Drawing: EXHIBIT28A XREFs: COPYRITE S-81RX T-SAI2
Drawn: LWR Order: MEC00 File: 1913.28 Drawer: C Plotted: 12 MAY 2010

17.2